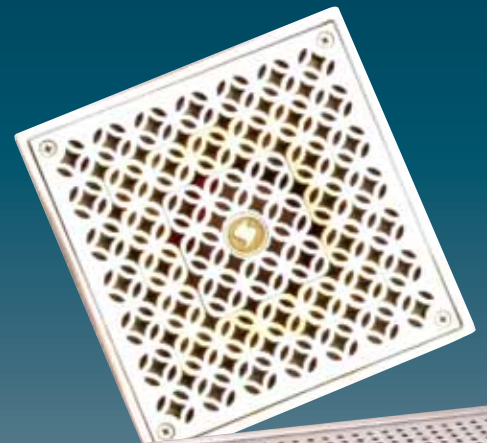




Est. 1954

ACORN ENGINEERING COMPANY
Manufacturers of Engineered Plumbing Products



PORTFOLIO OF PRODUCTS
& FAMILY OF COMPANIES









ABOUT ACORN







Acorn Engineering Company has remained a trusted name in institutional, industrial, and commercial markets since the company's first hand-welded plumbing fixture in 1954. It's a name known for durability and vandal resistance; for custom-engineered products that meet the specific demands of an institution.

Today, Acorn Engineering and its Family of Companies manufacture stainless steel plumbing fixtures and systems for schools, stadiums, hospitals, hotels, and many high-traffic or commercial environments. From security fixtures to vacuum plumbing systems, our products are manufactured in our facilities throughout North America to meet the needs of any project.

FAMILY OF COMPANIES / TABLE OF CONTENTS

DIVISIONS								
	Engineered Plumbing Products	Drinking Fountains, Water Coolers, Chillers	Emergency Drench Equipment	Vacuum Plumbing Systems	Tankless Electric Water Heaters	Access Doors Roof Hatches	Luxury Plumbing Products	Hospital and Therapy Equipment
	pg. 10	pg. 28	pg. 40	pg. 22	pg. 26	pg. 34	pg. 46	pg. 42

PARTNERSHIPS				
	Specified Plumbing and Drainage Products	Fire Protection Equipment	Thermoplastic Injection Molding	Outdoor Drinking Fountains, Park Structures
	pg. 17	pg. 36	pg. 48	pg. 30

PARTNERSHIPS						
	U.K. Distribution Partner	Canadian Distribution Partner	Sacramento San Francisco (California) Distribution Partner	Los Angeles San Diego (California) Distribution Partner	Las Vegas (Nevada) Distribution Partner	Arizona Distribution Partner

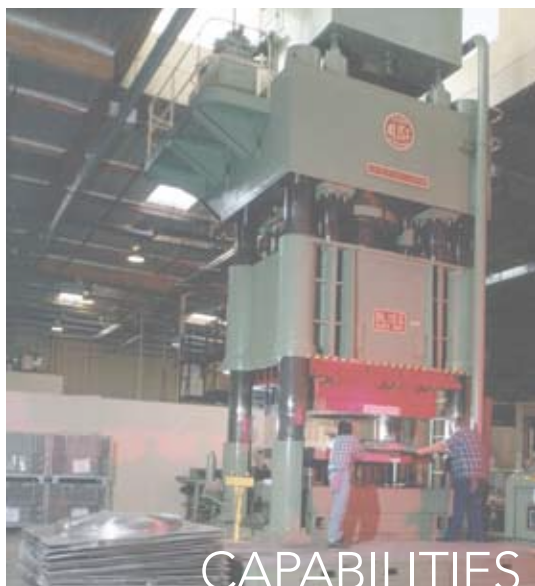
- 50 School Application
- 52 Hospital Application
- 54 Correctional Application

- 56 Hospitality Application
- 58 Commercial Application



Because we research, design and manufacture our own products, customers have the benefit of going to one supplier to get the job done, with choices that meet ADA requirements and the highest standards for safety. Products are made from reclaimed stainless steel—our material of choice from the beginning. Acorn Engineering Co. now sculpts this material into plumbing fixtures and systems that address complex environmental issues

such as water conservation and energy efficiency, and contribute LEED points toward earning U.S. Green Building certification. In this way, we support a “whole building” approach to commercial sustainability, by providing products that integrate to make specification and maintenance easy, reduce a facility’s costs, and conserve valuable resources.



CAPABILITIES



CRAFTSMANSHIP



INDUSTRY LEADER



INFINITE POSSIBILITIES

A STRONG CONNECTION



Est. 1954

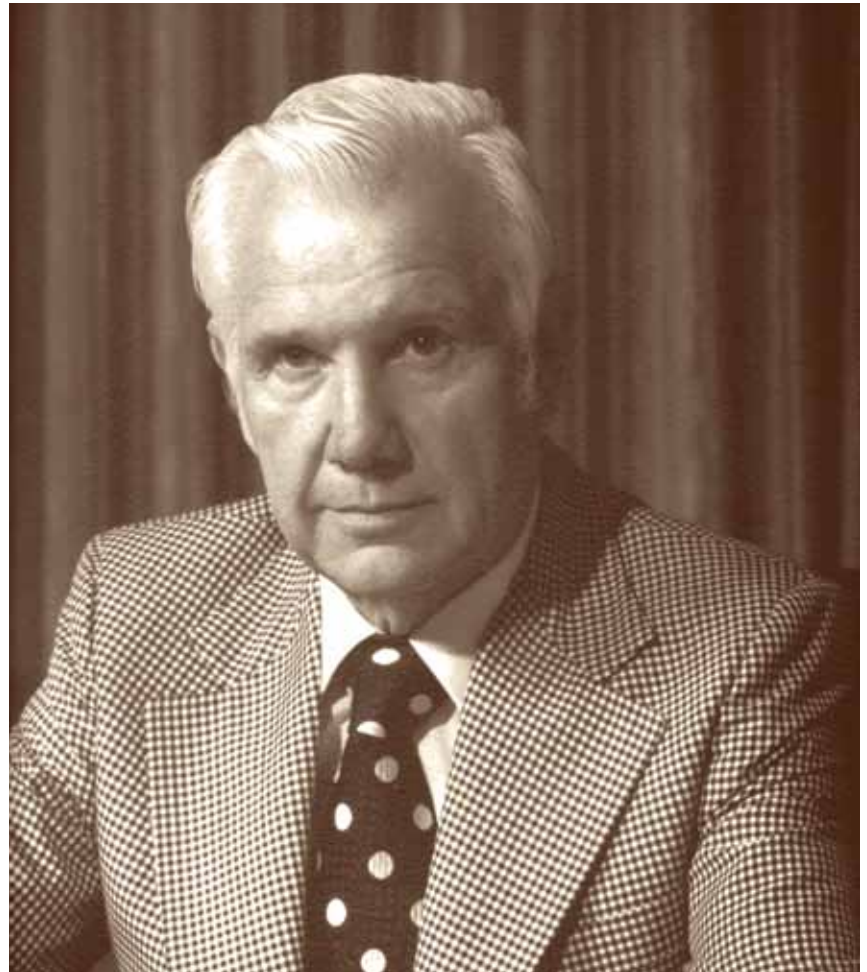
In 1953, Earl Morris founded the Earl L. Morris Company (ELMCO) in downtown Los Angeles. Products from Jay R. Smith Mfg. Co. were amongst the many quality-manufactured ones represented. After years of experience in sales, Morris found

a niche for durable stainless steel fixtures created as specified by the customer. Entering into plumbing manufacturing alongside his friend Jay R. Smith, Morris established a new company called Acorn Engineering Company in 1954.

Since the company's inception, Acorn Engineering Co. has grown to include 12 divisions, each one responding to their individual market's demand for custom-engineered plumbing solutions. As the company's product line drasti-



The start—the **Earl L. Morris Company**, which later became the modern day Elmco Sales (another company owned by Acorn Engineering Co. in the Western U.S.). *Earl L. Morris*- second from left.



EARL L. MORRIS Founder of Acorn Engineering Company



One of Acorn Engineering Co.'s first mobile vehicles



Manufacturing one of Acorn Engineering Co.'s first Penal-Ware® Combys

ACORN ENGINEERING CO. MERGES WITH JAY R. SMITH MFG. CO.



cally expanded, its foundation remained steadfast: to design and produce the finest quality plumbing products at competitive prices. Jay R. Smith Mfg. Co., together with the Acorn Engineering Family of Companies, shares this vision

today in a joint business alliance. Jay R. Smith of Smith Industries and Earl L. Morris were both modern-day pioneers in the industry, each developing strong companies and a strong friendship until they passed away. To this day, the many

Elmco branches remain a Jay R. Smith Mfg. Co. sales representative, and a representative of the collaboration and personal bond that transcends three generations and continues with the Smith and Morris families alliance today.



Founder **JAY R. SMITH** (center) of Jay R. Smith Mfg. Co. shown with his son Jay L. Smith (far right)



Machine shop at Jay R. Smith Mfg. Co. 1950



Jay R. Smith Mfg. Co. operations, New Jersey, 1947

ACORN ENGINEERING CO. & JAY R. SMITH MFG CO.'S COMBINED CAPABILITIES

PRODUCT SOLUTIONS Manufacturing specific to each individual job

MINIMAL OUTSOURCING Designed and manufactured in-house

HISTORY OF QUALITY Working with engineers and specifiers since 1954 (Acorn) and 1926 (Jay R. Smith Mfg. Co.)

EXPERT ASSEMBLY Products are hand-welded by valued craftsmen

CUSTOM CASTING Solid surface and Terrazzo materials in standard and custom dimensions



MANUFACTURING CAPABILITIES

- Fabrication (shear, punch, bend, saw, cut, weld, polish and paint)
- Machining (drill, ream, tap, countersink, mil, turn, thread, bore and groove)
- Assembly (stamp, package, braze, assemble, test, and plastic welding)

Acorn Engineering's Family of Companies is a full-service entity, creating products specific to the demand of many industrial, commercial and institutional needs. Products are designed and manufactured in-house, in Los Angeles since 1954, as well

as in additional facilities all throughout North America, including Jay R. Smith Mfg. Co. in Montgomery, Alabama. From complete casting capabilities, to our full woodshop, there is minimal outsourcing. We construct every piece manually to

our highest standards. We can manufacture quickly and ship efficiently, so customers don't have to deal with the complexities of going overseas. In short, we offer turn-key project management. We take an engineer, architect and de-

ACORN ENGINEERING CO. & JAY R. SMITH MFG CO.'S COMBINED CAPABILITIES

Acorn Engineering Co. and Jay R. Smith Mfg. Co. are both uniquely qualified to meet all of your custom fabrication, manufacturing and precision fabrication needs in the following materials:

SPECIALTIES

- Steel – stainless, galvanized (sheet, tube and square stock)
- Solid Surface "Bioresin" and Corterra
- Terrazzo
- Plastic
- Cast-iron

ADDITIONAL RAW MATERIALS

- Aluminum (sheet, tube and square stock)
- Copper (sheet, tube and square stock)
- Brass (sheet, tube and square stock)



MANUFACTURING CAPABILITIES

- Polishing & Plating (polish, buff, strip and plate)
- Painting (blast, paint, enamel, dip and dry, and powdercoating)
- Pattern Shop (design, prototype and model)
- Injection Molding



Est. 1954



Est. 1926

signer's vision and turn it into a reality. Whether a stainless steel fixture for a high-traffic public restroom, a lead-free drinking fountain in a school, or a custom vanity in a hotel suite, our fixtures are engineered to meet the standards required of

any project. We offer a complete package; even carrier supports for fixtures are available when specifying construction. With manufacturing facilities dedicated to metal, plastic, and wood raw materials, Acorn Engineering and its Family of Companies

has vertically integrated control of all production processes throughout. This allows for stringent quality control throughout each stage of production and assembly because there is rarely a need for outside vendor processes beyond our direct control.



PLASTIC BOTTLE FREE



LEAD FREE



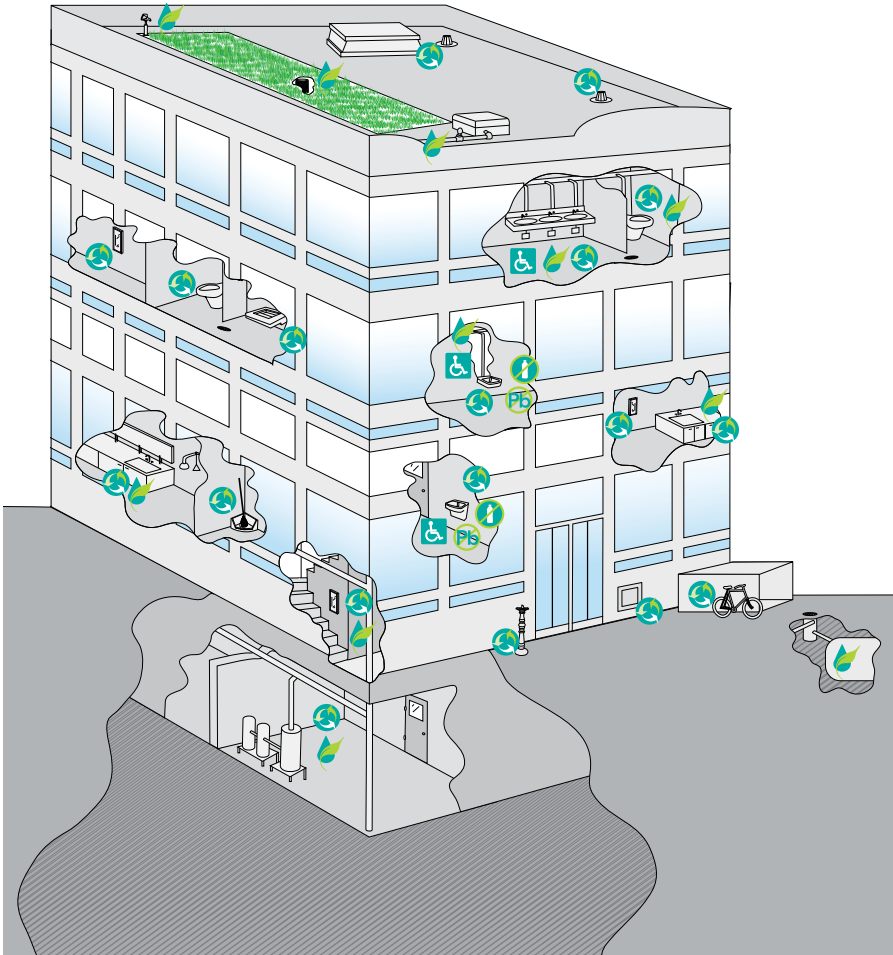
ADA COMPLIANT



RECYCLED MATERIALS



WATER CONSERVATION



Acorn Engineering and its Family of Companies is a member of **US Green Building Council**

MEMBERSHIPS AND ASSOCIATIONS

- AMERICAN SOCIETY OF PLUMBING ENGINEERS (ASPE)
- AMERICAN SOCIETY OF MECHANICAL ENGINEERS (ASME)
- AMERICAN SOCIETY OF SANITARY ENGINEERS (ASSE)
- IAPMO
- UNIFORM PLUMBING CODE (UPC)
- INTERNATIONAL PLUMBING CODE (IPC)
- PLUMBING AND DRAINAGE INSTITUTE
- ASTM INTERNATIONAL AND STANDARDS
- CSA STANDARDS
- AMERICAN RAINWATER CATCHMENT SYSTEMS ASSOCIATION (ARCSA)
- RAINWATER HARVESTING STANDARD
- AMERICAN BACKFLOW PREVENTION ASSOCIATION (ABPA)
- CONSTRUCTION SPECIFICATIONS INSTITUTE (CSI)
- MECHANICAL CONTRACTORS ASSOCIATION OF AMERICA (MCAA)
- AMERICAN SOCIETY FOR HEALTHCARE ENGINEERING

INDUSTRIES SERVED



Healthcare



Institutional



Hospitality



Commercial/Industrial



DRINKING
FOUNTAINS



TOILETS



DRENCH
EQUIPMENT



LAVATORIES
WASH BASINS



DRAINS
RAIN HARVESTING



SHOWERS



URINALS



FIRE
EQUIPMENT



OUR WHOLE BUILDING APPROACH TO PLUMBING



Picture a bathroom in a commercial or hospitality setting containing a multi-station basin manufactured from 80 percent recycled stainless steel, discreetly fitted with a tankless waterheater and featuring the most efficient water-saving engineering possible. Add in low-flow toilets, in addition to waterless or pint-flush urinals. If the entire building works on vacuum plumbing, each toilet fixture instead uses only 0.5 gallons per flush, and if the entire building's water use is regulated on a computer network,

conservation can be specified right down to each point of use. The necessary drainage for a rooftop garden or rainwater harvesting system makes a dramatic difference in a building's operating costs and environmental impact. And all of those products, from a grand-scale plumbing system to a drain, are available from Acorn Engineering and its Family of Companies. Whatever the vision for design, function, or environmental impact, Acorn Engineering Co. can outfit a project from start to finish. Because we

research, design and manufacture our own products, customers have the benefit of going to one supplier to get the job done. Further, products contribute toward earning **LEED points and US Green Building certification**. In this way, we support a "whole building" approach to commercial sustainability, meaning that we offer integrated solutions to all of a green building's challenges.



MERIDIAN Made from stainless steel and optional Corterra solid surface materials, units are durable and easy to clean, with an engineered and manufactured valve design that has been in use for over 50

years. Units require only one plumbing connection to provide hand washing stations in multiple configurations and are optionally outfitted with push button metering valves, sensor-activated

fixtures and a tankless water heater for quick, easy hand washing with minimal water use. **WASH-WARE®** washfountains combine unique space-saving designs without compromising basic durability



Kurve® Corterra Solid Surface Wash Basin - 3 Station



Meridian Corterra Solid Surface Hi/Lo Washbasin



Wash-Ware 3-Station Terrazzo Corner Lavatory in Palomino Tan color





and functionality. Designed to accommodate one to eight individuals simultaneously, multiple-station wash basins offer a highly customizable platform, making them the ideal choice for high-traffic

environments such as schools, stadiums, and industrial and public washrooms. For installations that require a durable yet economical choice, **DURA-WARE®** provides a variety of stainless steel fixtures

and configuration choices. Easy to install and maintain, Dura-Ware fixtures are engineered to withstand high-traffic use.



Stainless steel Meridian® multi-station wash basins



Meridian Stainless Steel Washbasin 3 Station

Meridian Stainless Steel and Corterra® Solid Surface

- Washbasins
- Toilets

Wash-Ware® Group Washing Systems

- Stainless Steel
- Terrazzo
- Corterra

Dura-Ware® Stainless Steel

- Lavatories
- Toilets
- Urinals
- Accessories



PENAL-WARE® CORRECTIONAL FIXTURES



www.acorneng.com

Manufactured of heavy-gage stainless steel, the Penal-Ware® line of high security, vandal-resistant fixtures is engineered and specifically designed to meet durability requirements and potential abuse commonly found in an institutional or correctional facility environment.

From the smallest details in accessories to models specially-engineered for ADA compliance and strength requirements, Acorn Engineering Co. has a solution. For a facility looking to retrofit for added security or switch from porcelain to stainless steel, Acorn Engineering Co. will provide

a product tailored to match existing rough-ins and reduce cost of installation.

MASTER-TROL® regulates, monitors, and provides complete control over all plumbing fixtures in a facility. Each valve in every fixture is controlled via a network



Correctional facilities require the expert welding and durability of an Acorn Engineering Co. fixture



Lavatory with Oval Bowl - Front Access - ADA Compliant



Bookshelf with Breakaway Clothes Hooks



Integral Frame Stainless Steel Polished Mirror



PENAL-WARE® CORRECTIONAL FIXTURES



www.acorneng.com

of computers to monitor or restrict use. It enables the user to set the number of flushes within a given time period for instance, or specify when and for how long a water faucet or shower is to remain active. Floods are thus eliminated, along with unexpected disruptions and windows

of opportunity for compromised safety. At the same time, it reduces overall water consumption in a building.

PENAL-WARE® STAINLESS STEEL

- Lav-Toilet "Comby"
- Lavatories

- Drinking Fountains
- Toilets / Urinals
- Security Showers
- Electronic Valve Controls



Stainless Steel Lav-Toilet "Comby" installed in a prison cell



Lav-Toilet "Comby"



ADA-Compliant Lav-Toilet "Comby" with Grab Bar



Lav-Toilet Comby with Lavatory "D" Bowl features a rounded design for enhanced safety






Acorn Engineering Co.'s stainless steel toilets and urinals are hand-welded and proven to be more durable than vitreous china fixtures. High Efficiency (HET) models

operate efficiently with any possibility of low-flow flush valve, easily integrating into a building's plans for water conservation. Additionally, bariatric models, color

powdercoating, and different mounting and outlet options make it easy to choose the right model for a specific application.



Waterless Urinal In addition to standard flow rates, urinals are available in Pint-Flow and Waterless models 



Stainless steel toilets are reliable and stylish in any setting

TOILET

- **High Efficiency Toilet (HET)** – 1.28 gpf
- **Dual-Flush** (cistern style) Toilet – 1.28 gpf
- **High Efficiency Urinal** – 1 pint



Squat Toilet



Two-Piece Toilet



Constructed of heavy-gauge stainless steel, Shower-Ware® fixtures are durable and vandal-resistant to provide years of virtually maintenance-free use. Using the Time-Trol™ electronic valve control system to conserve water usage makes this

combination ideal for high-usage shower applications such as beaches, schools, gyms and most locker room environments where conserving water and maximizing the use of available space is critical.

STAINLESS STEEL SHOWERS

- Built-In
- Wall-Mounted
- Column
- Free-Standing
- Compartment
- Electronic Valve Controls



Shower-Ware® column showers featured in a school environment



3-Station Apex Showers



Rear-mounted Showerhead



Apex Surface-Mounted Shower
ADA Compliant



SHOWER BASES / MOP SINKS



www.acorneng.com

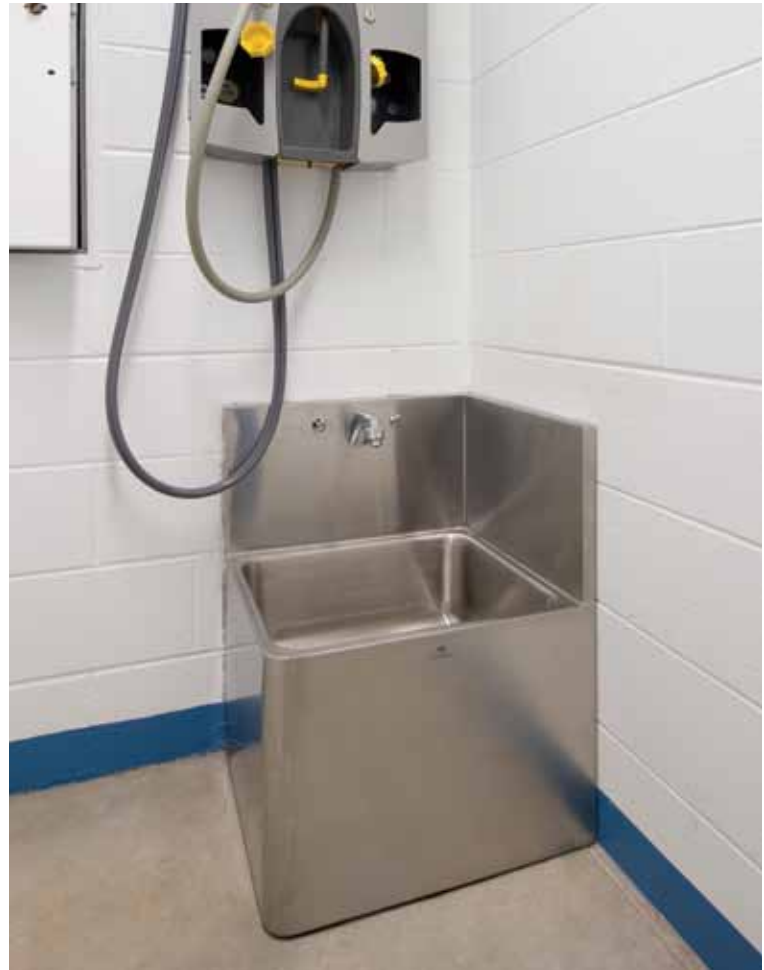
TERRAZZO-WARE® precast shower bases are made up of marble and cement binder—naturally occurring components which create an extremely durable, maintenance-free and attractive option for countertops

and shower bases. A full line of colors, options, and accessories complement each installation.

STAINLESS STEEL MOP SINKS and shower bases are non-porous, sterile, and easy to clean. They are available in different sizes, heights, and configurations.



Models with Integral Threshold Entrance allow for installation of a shower door (installation at an NYC hotel)



Stainless steel mop sinks are an easy to maintain sanitation and cleaning station



Terrazzo Reduced Height Shower Base with Wall Guards



Terrazzo ADA Compliant Shower Base with Tile Flanges



Terrazzo Corner Round Mop Sink



HYDRANTS



www.jrsmith.com

For more than eight decades, Jay R. Smith Mfg. Co®. has been focused on offering hydrants that help with job site demands, engineering specifications, and code requirements. Due to the differences in

construction applications, the type of wall or ground hydrant that is installed and specified, and that performs up to code can vary greatly by building type. This is why Smith manufactures and distributes

hydrants that are suitable for all building applications to include tilt-up construction projects, commercial buildings and professional office buildings.



Smith Guardian Dual Check® Hydrant and Stainless Steel Box



The Jay R. Smith Co. Hydrant Series



PLUMBING AND DRAINAGE



Jay R. Smith Mfg. Co. provides a comprehensive line of quality engineered plumbing and drainage products for the non-residential construction market. All Smith products are designed for adaptability, conformance

to codes, ease of installation, and maximum performance efficiency. Jay R. Smith Mfg. Co. works each day to bring you new, innovative products while striving to make their core products better.

- CUSTOM GRATES AND COVERS
- FIXTURE SUPPORTS
- WALL AND GROUND HYDRANTS
- STAINLESS TRENCH DRAINS
- RAINWATER HARVESTING PRODUCTS
- GREASE TREATMENT/INTERCEPTORS



A complete line of engineered drainage products



6-inch wide stainless steel Modular Trench Drain System



Infinite possibilities in construction; A selection of floor drains to match



STAINLESS STEEL DRAINS



www.jrsmith.com

The inherent durability of stainless steel makes it an ideal material for floor drains, floor sinks, floor cleanouts and trench drains, regardless of application. Stainless

steel, with its intrinsically gratifying appearance, is perfect for facilities where hygienics, corrosion resistance, and visibility are inherent, such as:

- RESTAURANTS
- FOOD PROCESSING PLANTS
- HOSPITALS
- CHEMICAL PLANTS
- DAIRIES
- BREWERIES



Stainless Steel Floor Drains and Sinks



Floor drain for commercial restroom application



Left: Jay R. Smith Mfg. Co. Fabricated Polymer Concrete Trench Drain System at the Centennial Square Fountain, West Palm Beach, FL

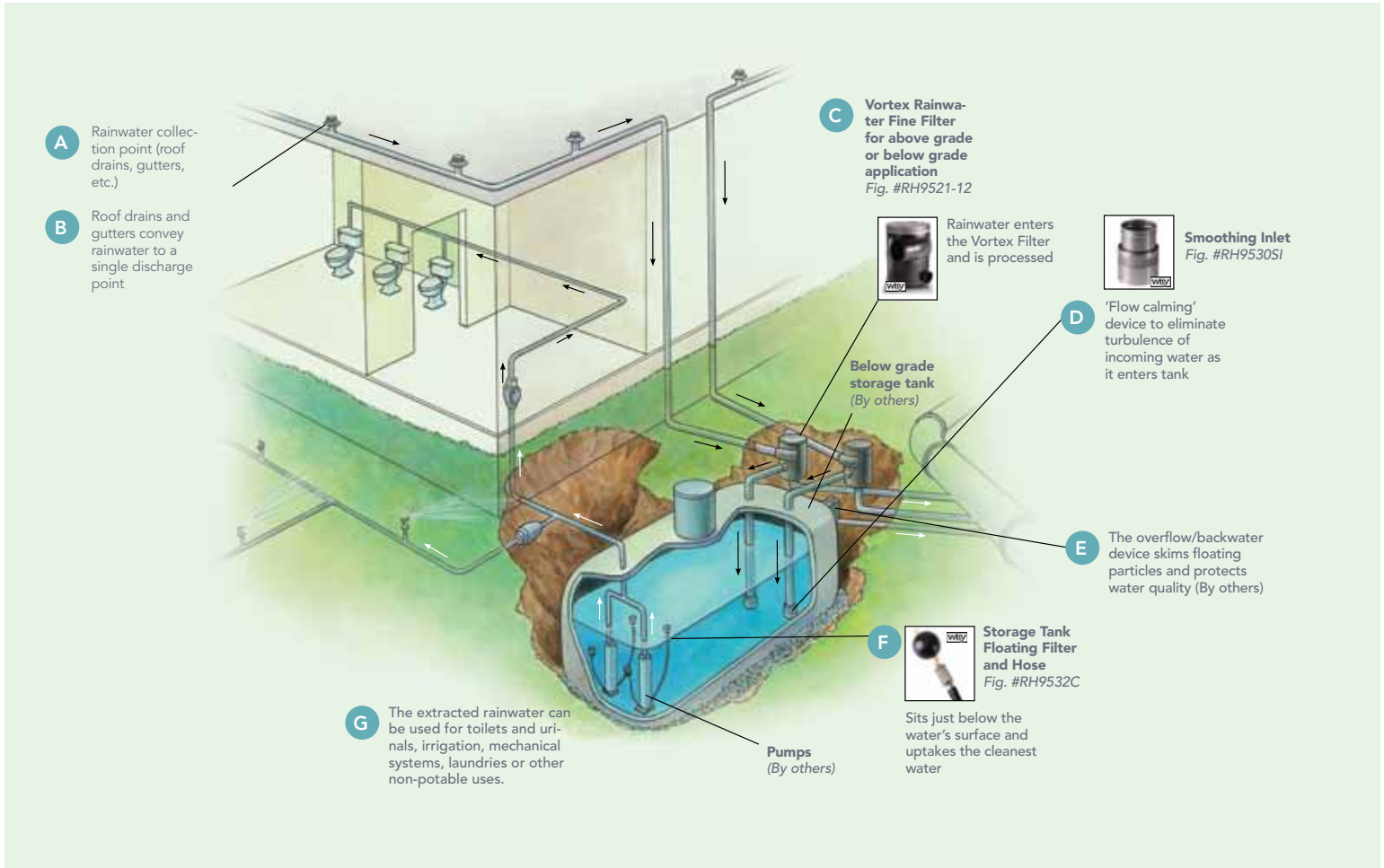




Jay R. Smith Mfg. Co.® offers Rainwater Harvesting Filters for roof areas of any size. Rainwater harvesting systems are simple to install, operate, and maintain. It is convenient in the sense that it provides water at the point of consumption

and operating costs are negligible. Water collected from the roof catchment is available for use in potable (per local approval) and non-potable applications such as:

- Toilets and/or urinal flushing
- Laundries
- Mechanical Systems
- Custodial Uses
- Site Irrigation



Typical Commercial Application for Rainwater Harvesting (drawing for illustration purposes only)



Rainwater is ideal for landscape irrigation



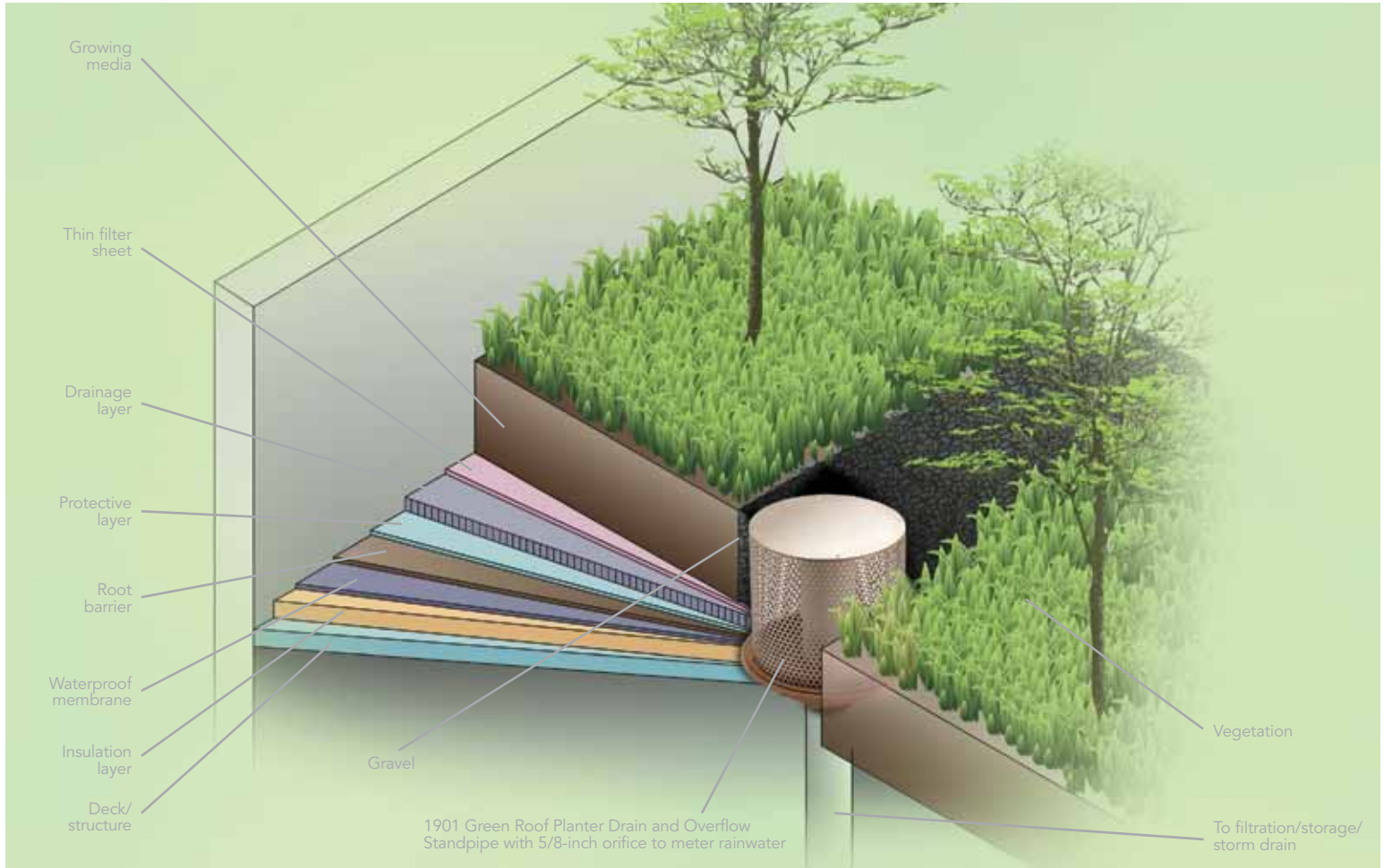
Rainwater Harvesting Filters for roof areas of any size



Jay R. Smith Mfg. Co.'s line of engineered roof drains includes professional grade Area, Scupper, Overflow, Planter, Plaza, Siphonic, and Traditional roof drains for all types of conditions and aesthetics. Their cast iron and stainless steel roof

drains can be furnished with a stainless steel gravel stop and dome; a bronze flashing clamp, dome, and standpipe; a fabricated stainless steel drain; or cold dipped galvanized cast iron body. As an industry leading manufacturer of plumb-

ing and drainage products, Jay R. Smith Mfg. Co. has developed a line of green roof and cool roof drains that are engineered to work on extensive, intensive, multifunctional, and cool roofs.



Intensive roof construction requires roof drains that will allow sufficient drainage yet protect the integrity of the growth media and vegetation



A multi-functional roof features intensive roof planting combined with roof paving



Our line of engineered roof drains are available for all types of conditions and applications

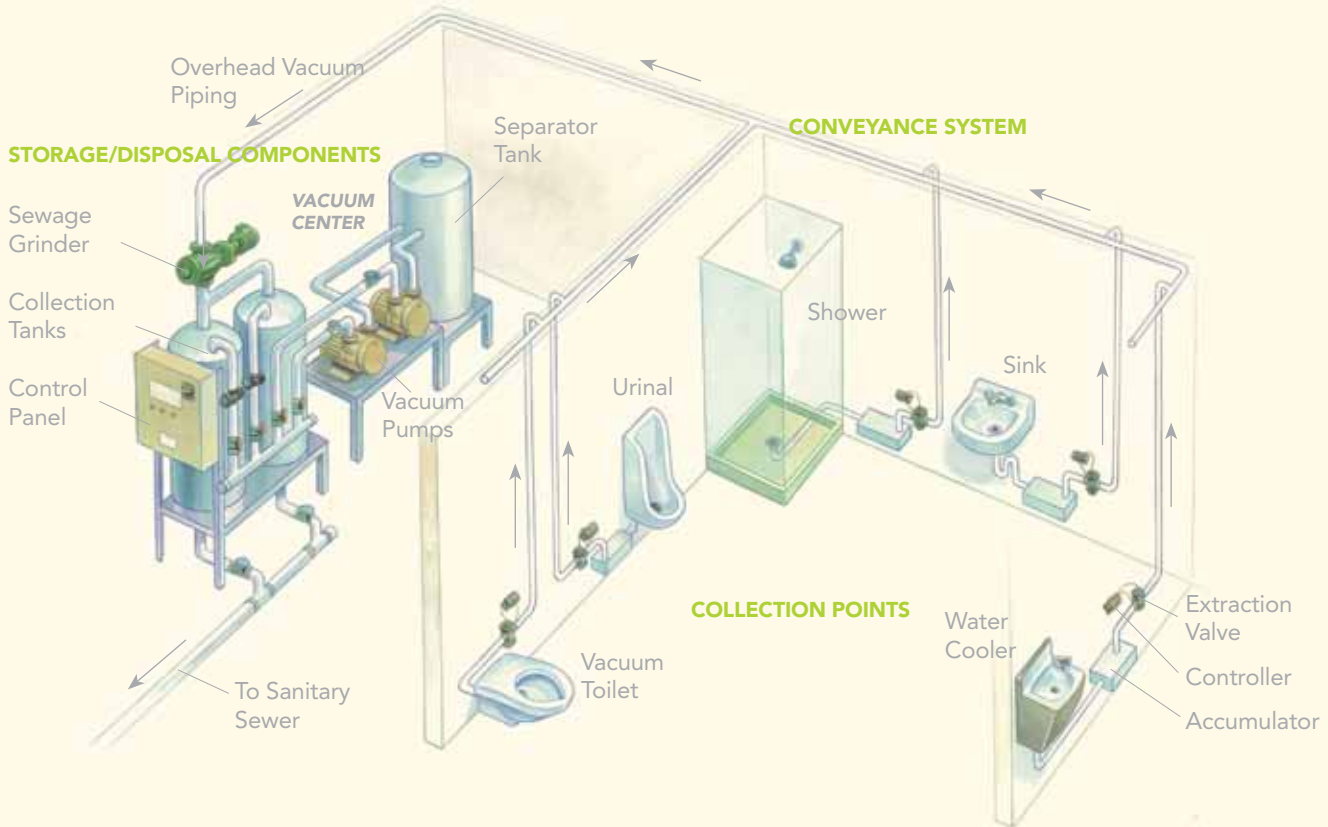


AcornVac® Vacuum Plumbing Systems are an environmentally friendly alternative to gravity drainage that allows greater flexibility in plumbing system design and installation. AcornVac Vacuum Plumbing

Systems use the interface of vacuum and atmospheric pressures to lift waste vertically without requirement for floor penetration, underground drainage, or continuous slope, providing freedom to

locate plumbing fixtures without waste or vent stacks. AcornVac vacuum flush toilets provide an efficient, water-saving flush using less than **1/2 gallon of water** per flush cycle.

COMPONENTS OF A TYPICAL VACUUM SYSTEM



For illustration purposes only

HOW IT WORKS

An Introduction to Vacuum Sewage and Plumbing Systems

A Vacuum Drainage System consists of three basic components:

- 1. Collection Points** Typical sanitary and gray water collection points include toilets, sinks, showers, urinals, and drinking fountains. Typical condensate collection points consist of refrigeration coils, service coolers and freezers as well as frozen and refrigerated food display cases.
- 2. A Conveyance System** The vacuum drainage piping network can be routed where most convenient including overhead or through voids in ceiling spaces. This allows for transport of waste from its point of origin to the vacuum generating station.
- 3. Storage/Disposal Components** A vacuum generating station [Vac Center] includes the vacuum pumps that create a vacuum in the piping and storage tanks that collect and discharge the waste into the sewer system. The vacuum pumps run only on demand and redundancy is provided. The Vacuum Center may also include sewage discharge pumps that pump waste from the storage tanks into the sewer.

- Allows greater freedom and flexibility in waste piping layout, building design, and construction
- Provides an alternative to conventional gravity drainage for construction projects with site or structural limitations
- Enhances security and control in public and institutional projects
- Reduces maintenance requirements associated with waste line blockages
- Reduces construction time and cost
- Provides an environmentally friendly, water-saving flush requiring less than 1/2 gallon of water

PRISONS / JAILS / CORRECTIONAL CENTERS Designed to fit most any construction challenge



- Direct connection of multiple toilets into the same waste stack is eliminated, thereby preventing inmates from passing contraband between cells.
- Vacuum toilets eliminate cell-to-cell communication that inmates often use to create "planned plumbing chaos" by organizing large "group flushes" that are typical for gravity drainage systems.
- The operational dynamics of a vacuum plumbing system result in fewer in line blockages, reducing maintenance cost and disruption. When toilet blockages do occur, they are easily located. Furthermore, inmates who routinely try to vandalize the plumbing system by attempting to clog the system are easily identified promoting significantly improved security and control.
- Individual cells or groups of cells can be "turned off" prior to a security sweep to prevent contraband or other incriminating evidence from being flushed away.
- Because of the small diameter flush line from the toilet to the main or branch piping connection, practically anything that can be flushed through the toilet will flow through the system to the vacuum storage tanks. Articles large enough to block the piping network in a typical gravity installation are stopped at the vacuum toilet. This significantly reduces the amount of ongoing maintenance normally associated with unclogging gravity drainage piping networks.
- Vacuum flush toilets do not splash during the flush cycle, significantly reducing the spread of bacteria within the facility, promoting a healthier environment for the prison population.

VACUUM PLUMBING SYSTEM - *HEALTHCARE APPLICATION*



LABORATORIES / CLINICS / MEDICAL CENTERS
Designed to fit most any construction challenge



An Acorn Vac® vacuum plumbing system can create a cleaner and healthier environment

- A vacuum toilet uses only ½-gallon of water per flush. This provides significant savings in the water supply and sewage disposal costs. These elements have applications to LEED and “green building practices.”
- Designed to provide complete redundancy on all primary Vac Center components. This includes dual collection tanks and multiple pumps.
- Creates a cleaner environment and reduces the health hazards associated with gravity drainage. Since the piping system is maintained under a continuous vacuum, water and debris from pipes and toilets are drawn into the system, not out. There is no splashing or dripping, thus minimizing the spread of bacteria.
- The system reduces the health risks of sewage overflow. It is a closed system, thus it keeps out vermin.
- Because of small diameter flushlines from the toilet to main or branch piping connection, practically anything that can be flushed through the toilet will flow through the system to the vacuum storage tank.
- The operational dynamics of a vacuum plumbing system result in fewer in line blockages, reduced maintenance cost and disruption.
- Vacuum toilets are quieter than traditional toilets when flushed. The Acorn Vac® vacuum toilets average only 73 dB.

SUPERMARKETS / CONVENIENCE STORES / DELICATESSENS

Designed to fit most any construction challenge



An Acorn Vac[®] system allows an existing space to be adapted to new occupant or design need

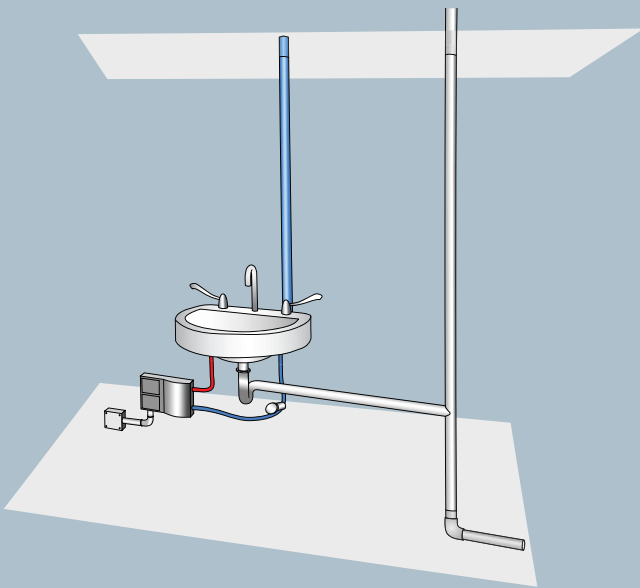
- Vacuum drainage systems eliminate the need for costly underground drainage piping in the sales area.
- Vacuum drainage systems work in concert with the new “open” architectural store environment where electrical and refrigeration services are brought to display cases from overhead. Drainage can now follow these services, allowing for unprecedented flexibility in store layout.
- Vacuum drainage systems are completely adaptable to last minute merchandising changes.
- Vacuum drainage systems easily accommodate seasonal display requirements.
- New construction projects can be completed faster, saving construction costs and allowing a facility to be brought online in a more timely fashion. Often, projects can be completed in inclement weather because the facility can be closed before the weather conditions prohibit construction.
- Vacuum drainage systems create a cleaner environment and reduce health hazards associated with gravity drains.
- Vacuum drainage systems allow existing buildings with limited drainage to be developed for supermarket use when traditional trenching and underground piping upgrades are cost prohibitive because of site conditions such as post tension slab, bed rock, asbestos, high water tables, etc.
- Because trenching is eliminated, store remodel activities are less expensive, safer, more sanitary, and take less time.
- Vacuum drainage equipment can be capitalized and taken with the owner if the facilities are abandoned.

Chronomite[®] manufactures tankless electric water heaters for point-of-use commercial and industrial applications. It's only operational when water is streaming through the plumbing, dra-

matically reducing hot water delivery time and misuse of electricity. More efficiency means less water use, and freedom from the costly and outdated conventional heater. Its patented micro-

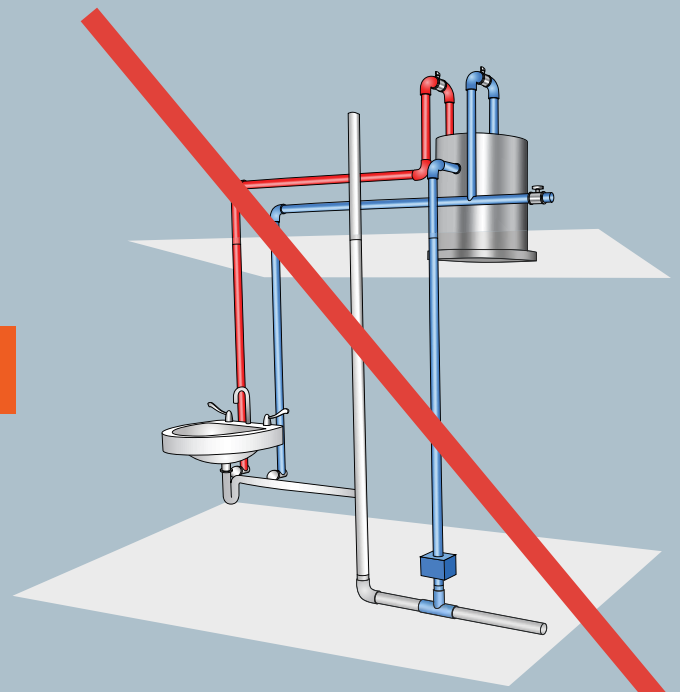
processor technology allows for a preset or controlled output temperature that delivers unlimited hot water without risk of scalding. The microprocessor's self-cleaning feature also prevents alkali and

Chronomite[®] Tankless Electric Water Heater



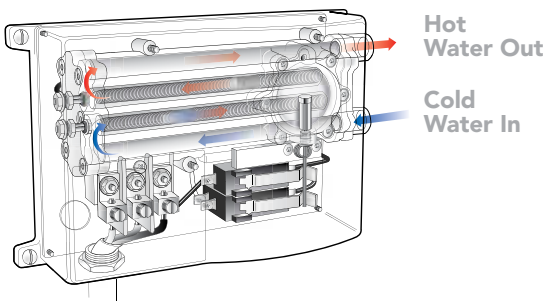
Chronomite electric point of use heaters require only a cold water supply and electricity to operate, and are installed at the point of use to provide instant hot water

Conventional Water Heater Tank



A conventional gas heater requires costly valving and piping and is slower to provide hot water to the fixture.

VS.



Digital microprocessor technology provides hot water at a consistent temperature.



The stainless steel Instant-Flow[®] model is supplied with a factory pre-set temperature

The Instant-Temp[®] model includes a thermostat for field adjustable temperature settings

calcification buildup, so there is less possibility for tank corrosion and flooding and less maintenance and operational costs. Chronomite electric water heaters operate without the costly hot water

pipng and valving associated with conventional tank heaters. Once connected to power, it's just cold water in and hot water out. It's simple and 99 percent energy efficient. Plus, it's only the size of a

dictionary, so it's perfect for remote locations or spaces with limited accessibility such as concession stands, sports arenas, and restaurant kitchens.

- **UNLIMITED HOT WATER**
- **99% ENERGY EFFICIENT**
- **COMPACT SIZE**
- **EASY, LOW-COST** maintenance and installation
- **PRESET TEMPERATURE:** Promotes healthy hand washing without risk of scalding
- **NO RISK OF BACTERIA** or legionella promoted in storage and holding tanks
- **CERTIFIED LEAD-FREE** to nationwide mandates 
- **SELF-CLEANING FEATURE** eliminates calcification buildup
- **MADE IN THE U.S.A.**, so products ship quickly and travel minimal distance
- **ADA-COMPLIANT** 



FLOW CONTROLS

Faucets installed with OMNI Flow Controls benefit from an exclusive, soft-to-the-touch Laminar Flow. This crystal clear solid stream of water completely coats the surface area. It feels like more water, but in reality, uses up to **90% less**.

- Reduces water use by 27% to 90% depending on the application
- Clean, no-splash design protects against spread of airborne bacteria
- Two-minute installation
- Exclusive pressure compensation

DRINKING FOUNTAINS AND WATER COOLERS



Acorn Aqua®'s complete line of indoor and outdoor drinking fountains offer the designer a variety of choices for finish, color and style to complement schools,

office buildings and institutions. Drinking fountains and water coolers are certified to the most stringent standards for lead-free drinking water, and stainless steel

construction ensures vandal-resistance and cleanliness. Child and adult barrier-free models are ADA-certified and offered with a multitude of accessories.



Acorn Aqua has a durable, safe, and affordable drinking fountain to match any learning environment.



Aqua Corterra Solid Surface, Barrier-Free Drinking Fountain



AquaStream Barrier Free, Two Station, Wall-Mounted Drinking Fountain is made from powdercoated cast-iron aluminum.



DRINKING FOUNTAINS AND WATER COOLERS



Top-down access makes maintenance easy and Aqua Access design allows for easy interchangeability with existing fixtures.

- **WATER COOLERS**
- **DRINKING FOUNTAINS**
- **CHILLERS**
- **LOW-FLOW BUBBLER** (0.45 GPM) standard



Aqua Access stainless steel water coolers feature convenient top-down access for easy maintenance



100% lead free stainless steel bubbler option and retrofit kit

AquaContour Drinking Fountain is both adult and child ADA compliant



HYDRANTS AND OUTDOOR DRINKING FOUNTAINS



murdock
SUPER SECUR
SINCE 1883
www.murdock-supersecur.com

AS EARLY AS 1853, while most people were drawing water from common wells, the Murdock Company was manufacturing and installing fountains in public areas throughout the country. Together

with Super Secur, they are now the leading designer, manufacturer and supplier of traditional and contemporary outdoor drinking fountains, water hydrants, pet fountains, and other plumbing fixtures

for parks and recreation areas. A wide variety of models provide a specific aesthetic in locations such as streetscapes, historical sites, parks, rest areas, walking or bike paths and many other recreational



Water delivery products that stand the test of time



Murdock's original fountain design still remains a classic today



Recessed Stainless Steel
Hose Box with Wall Flange



Freeze Resistant, Flush-Mounted Hydrant
with Bronze Box and Locking Lid



Compression
Post Hydrant



Barrier Free Bi-Level Pedestal
Mount Round Steel

OUTDOOR DRINKING FOUNTAINS



murdock
SUPER SECUR
SINCE 1893

www.murdock-supersecur.com

settings. Hydrants are heavy-duty and reliably supply water to many commercial and industrial locations, including farms, sewage/wastewater treatment plants, campgrounds, cemeteries, and roadside

parks. All products from Murdock-Super Secur are extremely durable and suitable year-round for a variety of environmental conditions.

- Outdoor Water Delivery Systems
- Drinking Fountains
- Pet Fountains
- Pool and Beach Showers
- Classical and Modern Designs



Murdock provides a drink of water to all thirsty creatures great and small



Traditional Barrier Free with Pet Water Fountain



All-Stainless Steel ADA-Compliant with push-button operation and Pet Water Fountain



Retro Series Octagonal Single Height with Foot Pedal



Classic Seasonal with Pet Water Fountain

Murdock-Super Secur manufactures pre-engineered steel buildings for parks, golf courses, camping areas, campuses, as well as many private recreational set-

tings. These custom designed buildings are vandal-resistant, easy to clean, and cost-effective. Whether your building specifications require a restroom, con-

cession, storage building, or a combination of all, Murdock-Super Secur can design a building to meet your specific needs.



Stainless Steel Bike Lockers are ecological and withstand year-round weather



Heavy Duty galvanized steel bike locker with powder coating



Custom fabrication



Pathway Series 5 with 9 foot chase



PARK & RECREATION BUILDINGS

- Storage and Concession
- Single and Multi-Person Restrooms
- Waterless Building Restrooms
- Shower Facilities
- Bicycle Lockers



Pre-Engineered Restroom Facility



Storage and Concession Series



Pathway Series 6 with Storage Addition



Pathway Series Restroom Facility



Elmdor/Stoneman® manufactures the finest quality sheet metal fabrication. Experience and innovative engineering have enabled Elmdor/Stoneman to become a well es-

tablished, high volume, low cost producer of access doors and roof flashings. With a nationwide distribution network, Elmdor/Stoneman is dedicated to delivering

quality products at a competitive price to the building and construction industry.



Stoneman® Roof Flashings are made of seamless lead and are available with counter flashing and vandal resistant flash hoods made of UV resistant PVC or cast iron.



Seamless Stoneman Lead Roof Flashing

ROOF ACCESS HATCHES provide convenient access to the roofs of buildings, allowing for ladders and stair access to the roof from the interior of the building. They install easily and are engineered for safety.





DOOR TYPES:

- Drywall access
- Fire-Rated access
- Acoustical tile access
- Plaster access
- Security
- Duct access

SEAMLESS LEAD ROOF FLASHINGS:

- Counterflashing
- Vandal-resistant hood
- Multiple roof penetration adapters
- Cast iron roof flashing



Elmdor Stoneman® Access Doors blend with decor to conceal and protect plumbing



DW Dry Wall Access Door



FR Fire Rated Wall Access Door



SLA Slammer Access Door



Since 1937, Potter Roemer has been the leading supplier of a wide range of products that include hose and valve cabinets, fire hose and accessories, fire extinguishers, fire department valves,

connections, specialty equipment and a refined line of architectural products. Whether it's the custom capabilities necessary for the world's most renowned art museum in Los Angeles, the world's

tallest buildings in Chicago and Kuala Lumpur, international airports on every continent, schools, churches, or office buildings, Potter Roemer is the expert on delivering greater safety for building



Recessed Fire Hose and Extinguisher Cabinet



Pressure Regulating Control Valve
Pressure Regulating Hose Valve



Recessed Fire Extinguisher Cabinet



Surface Mounted Aluminum Fire Extinguisher Cabinet



Semi-Recessed Steel Fire Extinguisher Cabinet



Recessed Fire Extinguisher Cabinet



occupants, greatly reduced liability for building owners, and peace of mind for the specifier. In-house manufacturing and custom capabilities, combined with a large in-stock inventory means the right

product is readily available for your project. Potter Roemer—quality and service, proven over time.

FIRE PROTECTION EQUIPMENT

- Fire Extinguisher & Valve Cabinets
- Hoses & Accessories
- Extinguishers
- Valves
- Connections



Semi-Recessed Fire Extinguisher Cabinet



Semi-Recessed Steel Fire Extinguisher



Steel
Defibrillator Cabinet



The Potter Roemer Omnibus A comprehensive line of fire protection equipment and accessories





Whether it's a standard, modified, or a custom product for a specific application, Potter Roemer, together with Fire Pro, takes pride in delivering with per-

sonalized customer service and tailored design and engineering. Fire Pro works with the customer's location and need to design anything, whether it's a modifica-

tion to an existing product or a one-of-a-kind design for a specific application. Because every product should hit the mark— in function, reliability, and pricing.



Roof Access Hatch



Fire Pro's 12-inch Manifold





Since its inception in 1979, Fire Pro's mission, "To manufacture quality products at an affordable price with short, reliable lead times" still holds true, mak-

ing Fire Pro a successful division of Potter Roemer. Monitors and nozzles from Potter Roemer Fire Pro are essential in mining industries, oil refineries, and pet-

rochemical settings for fire protection, dust abatement, cleaning, and many other uses requiring precise high-flow water delivery.



Monitors and nozzles from Potter Roemer Fire Pro are essential in mining industries, oil refineries, and petrochemical settings for fire protection, dust abatement, cleaning, and other uses requiring precise high-flow water delivery



Fire Pro supplies standard and custom-manufactured monitors and nozzles



100% all-stainless steel construction with high-polish finish



Acorn Safety® manufactures a complete line of drench showers, eye/face washes, and combination showers. Products feature high-visibility yellow ABS plastic and powder coating for corrosion protection

and easy location. An inline strainer protects against harmful particulates, and stainless steel components throughout increase durability. Models also ship in protective packaging with as much

pre-assembly as possible—all features to ensure units work reliably the first time, every time.



With over 50 years of history as a plumbing fixture manufacturer, Acorn Safety® serves laboratories and industrial settings with the highest quality standards and safety compliance.



Barrier-Free Recessed Eye-Face Wash



Horizontally-Mounted Emergency Shower



Wall Mounted Eyewash and Body Drench Hose



Deck Mounted, 90° Swivel Eye Wash



- EYE WASHES
- EYE/FACE WASHES
- SHOWERS
- COMBINATION STATIONS
- DRENCH HOSES
- MIXING VALVES
- PARTS & ACCESSORIES



Acorn Safety® products offer the most standard features on every model, ensuring units work the first time, every time.



Wall Mounted Eye/Face Wash
Stainless Steel Bowl



Pedestal Mounted Eye/Face Wash,
Stainless Steel Bowl with a "Clam-Shell"
Stainless Steel Cover



Heat Traced
Combination Station



Combination Safety
Shower and Eye
Wash Station





Since 1946, Whitehall® has been manufacturing comfortable and effective equipment aimed at providing convenience and comfort to both the patient and the caregiver. With over 60 years of expertise, the Whitehall name is trusted

in health care and treatment facilities around the world. Care-Ware® stations, scrub sinks, and toilets are constructed of high quality, durable materials. Made of special composites, cabinets are stain-resistant and most can be specified with

either stainless steel or vitreous china toilets. Most units feature removable access panels and doors that make installation, maintenance, and cleaning easier.



Care-Ware® stations are constructed of high quality, durable materials. Durable, stainless steel toilets can be powdercoated conventional white.



Versalette®



Swingette®



Swivette®





HOSPITAL PATIENT CARE UNITS

- Free Standing
- Built In
- Wall & Floor Outlet

- SCRUB SINKS
- BARIATRIC TOILETS



Whitehall's Surgical Scrub Sinks are designed and engineered to be durable, easy to maintain, and convenient to use



Bariatric Toilet with white Enviro-Glaze® powder coating



Compact Scrub Sink



Double Station Surgical Scrub Sink





Whitehall® Manufacturing's therapy products are designed to anticipate every recuperative and healing need imaginable. Whitehall's line of hydrotherapy whirlpools is the largest in the industry. From one man-

ufacturer comes Thermalator moist heat treatment units, ParaTherapy paraffin tanks, Thermo-Therapy dry heat modalities, and Forma-splint thermoplastic splint pans—each offering specific types of regulated

thermal effects. Whitehall continues to grow with the acquisition of trusted brands like Dakon® and AquaWhirl® whirlpools, as well as Dickson® paraffin baths, Forma-Splint, and Thermo-Therapy product lines.



Whitehall Manufacturing's experience is reflected in the way products are designed, manufactured, and supplied



Full-Body Immersion Tank



Slant-Back Hydrotherapy Whirlpool



Glacier Freeze with Cold Paks



The best qualities from each of these products only serve to expand on a diverse line of rehabilitation equipment that offers a greater depth of products to meet the changing needs of health care providers.

STAINLESS STEEL

- Therapy & Health Care Products
- Hydrotherapy Whirlpools
- Thermal Splint Units
- Paraffin Tanks

- Hot Packs and Heating Units
- Cold Packs and Cold Storage Units
- Bottle Warmers



A variety of stainless steel whirlpools for all applications



ParaTherapy Paraffin Tank



Thermo-Therapy Dry Heat Application



Whitehall's Little Series Compact Portable Equipment



Neo-Metro® draws from the experience of parent company, Acorn Engineering Co., to sculpt luxury bath furnishings from stainless steel. Hotels, restaurants, nightclubs and

homes experience the combined benefits of Neo-Metro®'s stainless steel fixtures: contemporary good looks, recycled content, and proven longevity and durability.

Products look good while withstanding the high-traffic use found in popular settings. In the highly competitive area of hospitality, we understand that each of our



Neo-Metro's bath decor combines contemporary good looks with the durability of stainless steel



System M2 Stainless Steel Basin in White Powdercoat



SLAB™ Solid Surface Basin





customers is looking for that design edge to set them apart from the competition. Neo-Metro has collaborated with a num-

ber of luxury hotel clients such as the Standard Hotel in New York City, the Westin New York at Times Square in New

York City and the Betsy Ross Hotel in South Beach Miami.



Ebb® Console with Blanco Solid Surface Countertop



Wall-Mounted Ebb® Console with Green Tea Illuminated Countertop



miniLOO™ Dual-Flush Toilet



Neo-Comby™



HWS with Black Powder Coat Finish



Acorn-Gencon® Plastics provides complete injection-molded product solutions from concept to completion. Engineered design services combined with complete manufacturing capabilities ensure the best project production flow from concept to completion.

DESIGN/ENGINEERING

Dedicated staff of experienced project managers. 2D & 3D file handling capabilities (AutoCad, ProE, Solidworks). Rapid prototypes (SLA, SLS, thermoplastic). Mold design review. Process and tooling trouble-shooting.

TOOLING SERVICES

Full service toolroom to support production. CNC machining centers, sinker EDM, lathes and surface grinders. Complete project management of Chinese and Domestic mold-making. Mold design. Mold maintenance and preventative maintenance programs. Mold sampling.



View of molding machines. JSW injection molding presses; consistency and repeatability



ABS Fire Hose Nozzle



Medical Devices



Electronics Housings

MANUFACTURING CAPABILITIES

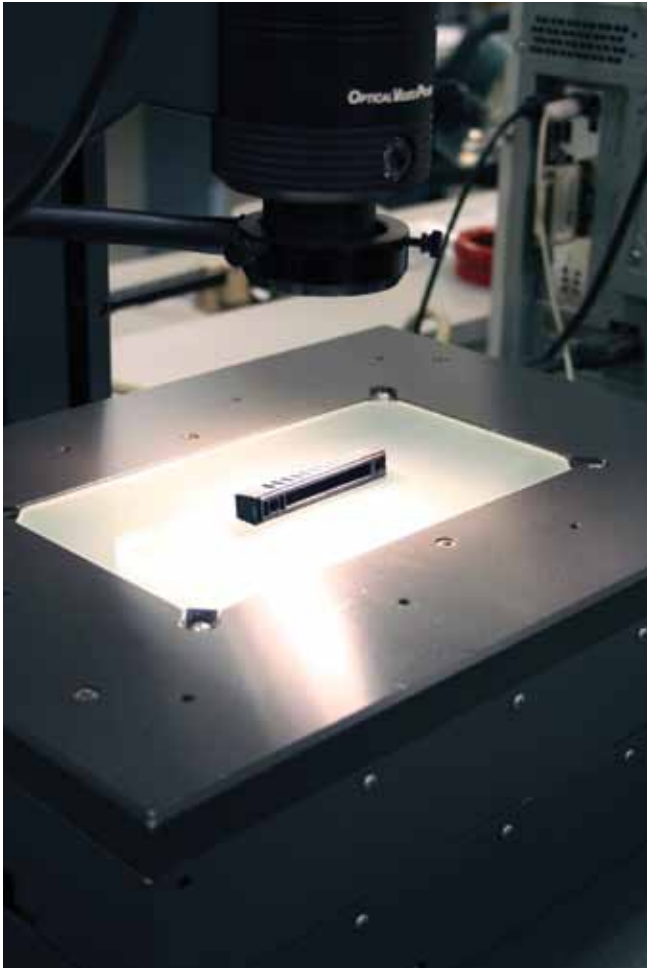
25 injection molding presses, from 22 to 650 tons. Process automation with robotics. Insert molding and co-molding / over-molding. Short and long runs. Short lead-times.

QUALITY ASSURANCE

ISO 9001: Certification.
Fully equipped Quality Assurance Lab (CMM, RAM Optical). SPC capabilities. Capability studies (PCS). ANSI/ASW Z1.4 AQL lot sampling.

SECONDARY OPERATIONS

Sub-assembly to complete assembly. Ultrasonic welding. Hot stamping. Retail packaging. Part machining.



Optical Comparator
Highest quality molded parts; detailed inspections



Highly trained staff of technical molders



Overmolded Scuba Regulator



Styrene Honey-Bee Frames



Nylon And TPE Overmolded Hand Tools.
Steel tubing manufactured by Acorn Engineering.

SCHOOL APPLICATION

In our company's early days, Acorn Engineering Co. designed and engineered a market-leading product line of fabricated stainless steel prison fixtures. Units were, and still are, made from unified pieces hand-welded together as one seamless unit. Consequently, Acorn Engineering Co.

became a worldwide leader in the market for vandal-resistance. Fixtures that save costs, maintenance, and resources are valuable in any high-traffic setting, most especially in schools. Stainless steel, a material known for its cleanliness and durability, has been our material of choice

since the company's beginning in 1954. Now that material is recognized for its sustainability. Today, Acorn Engineering Co. sculpts 80 percent recycled stainless steel into products that address complex environmental issues such as water conservation and energy efficiency.



Products from Acorn Engineering Co. conserve our natural resources while maintaining a safe environment for our children (*Acme Showers shown*).



Potter Roemer® Fire Cabinet used in a school gymnasium



Whitehall® hydrotherapy whirlpools in athletic centers

SCHOOL APPLICATION

From water-saving toilets to vacuum plumbing systems, schools care just as much for these products as they do for vandal-resistance. Conserving our natural resources and maintaining a safe environment for our children is in everybody's interest. Lead-free plumbing components

ensure students enjoy unlimited access to clean drinking water. Products such as waterless urinals, low-flow toilets and drinking fountain bubblers, and sensor-operated fixtures combine to boost water conservation and earn LEED certification points.

- VANDAL-RESISTANT FIXTURES
- LEAD-FREE COMPONENTS
- WATER SAVING AND SUSTAINABLE OPTIONS
- DESIGNED TO MAINTAIN HEALTH AND SAFETY



Mop Sinks Toilets/Urinals Wash Fountains Wash Basins Showers Hose Boxes	Water Coolers Drinking Fountains Remote Chillers	Eyewashes Drench Showers Combination Showers	(Entire Building) Vacuum Plumbing Systems	Tankless Instantaneous Water Heaters For Hand Washing In Bathrooms	Access Doors Roof Hatches	Drains and Rain Water Harvesting	Drinking Fountains Hydrants Concession Stands Remote Bathrooms	Fire Extinguishers Cabinets Hoses Fire Department Connections	Therapy Equipment and Whirlpools
1	2	3	4	5	6	7	8	9	10



Acorn Aqua® drinking fountains in classroom settings



Acorn Engineering's Kurve® Basin reduces water consumption in a school setting

HOSPITAL APPLICATION

SINCE 1946

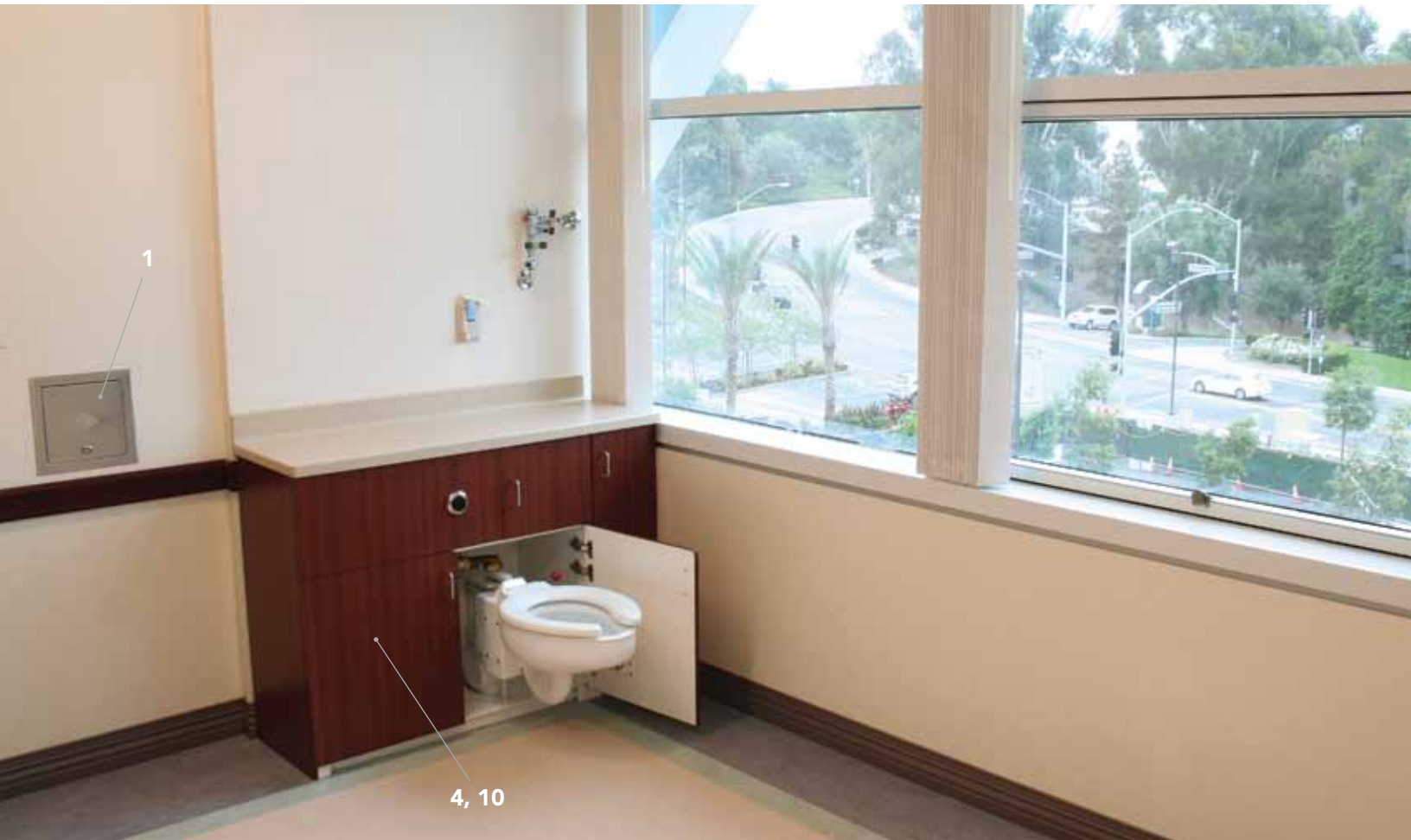
The industry standard in patient care units and other hospital fixtures

CUSTOMIZED PRODUCTS

Colors and surface materials to match the setting

LEGIONELLA

Chronomite® Instantaneous Water Heaters eliminate hot water temperatures found in storage and re-circ systems, known to promote the growth of legionella



Care-Ware® units operating on AcornVac® vacuum plumbing systems reduce the spread of airborne bacteria in a hospital setting (Acorn Engineering Co.® Hose Box and Chronomite® Tankless Water Heater also in use)

For hospitals, any interruption in tenant occupancy or facility access can compromise patient care. Acorn Engineering Co. works with hospitals to maintain a reliable plumbing infrastructure, with no interruptions in service. At the same time, products from many divisions come together to create a custom-designed, clean, and sustainable facility.

For instance, patient care units and bariatric toilets from Whitehall® Manufacturing work in conjunction with AcornVac® vacuum

plumbing systems and use only 1/2 gallon of water per flush as opposed to the 1.6 gallons per flush with conventional gravity plumbing. The system effectively removes waste while reducing potable water consumption by as much as 68 percent.

Unlike gravity drainage systems, AcornVac is installed above-ground, eliminating the risks involved when trenching and digging is risky or impossible due to necessary downtimes. Plus, the system can be installed vertically or horizontally to provide

flexibility in layout and architectural design, aiding in strategic placement of emergency equipment requiring water supply.

Stainless steel fixtures from Whitehall, combined with technologies such as AcornVac, create even safer environments by controlling vaporization of flush cycle and minimizing the spread of bacteria. At the same time, these integrated products and systems conserve water, resources, and money.

HOSPITAL APPLICATION

WATER EFFICIENCY

68% reduction in water consumption with the use of AcornVac®

DESIGN FREEDOM

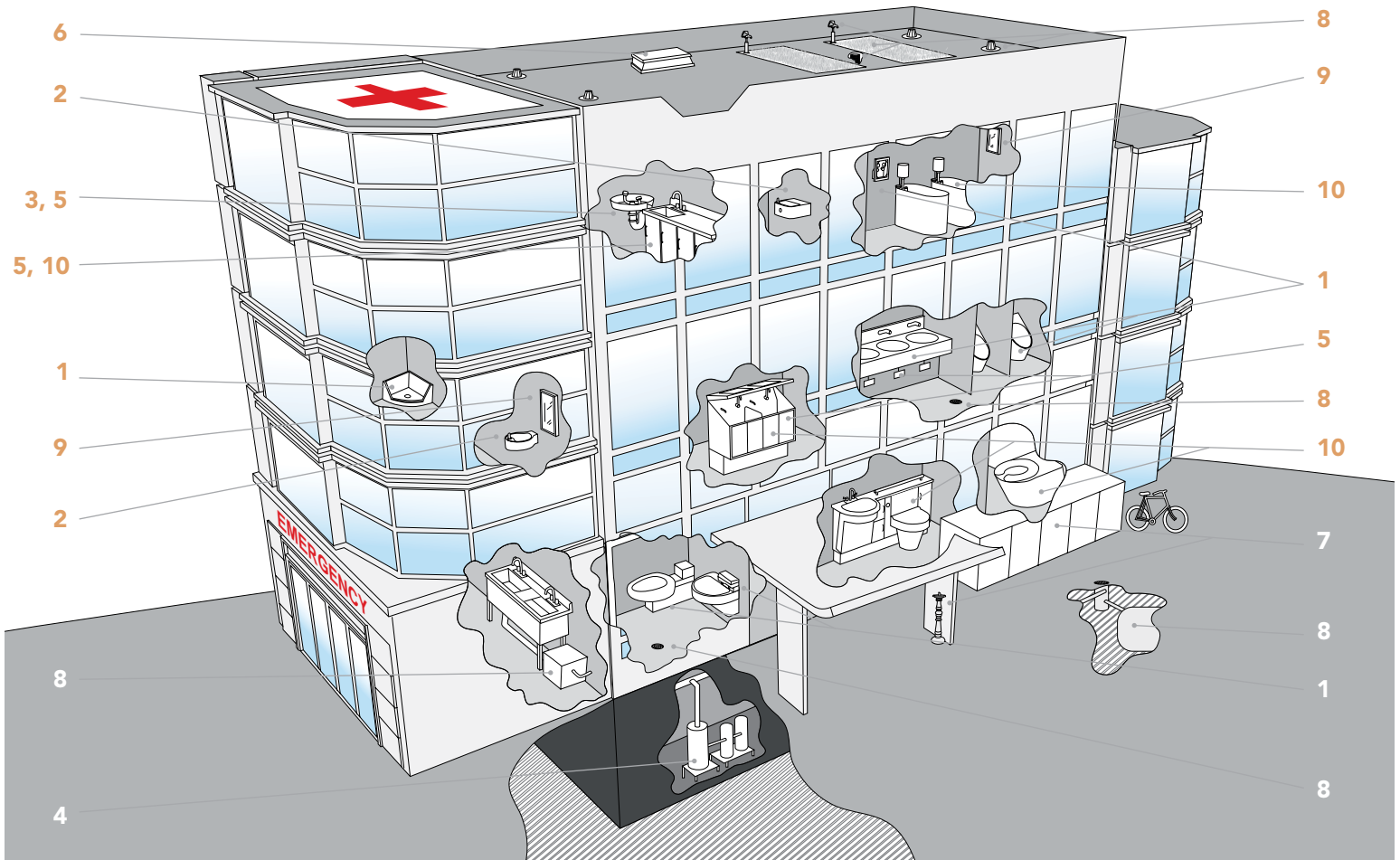
Units are easily integrated into pre-existing dimension requirements

REDUCED BACTERIA

Vacuum plumbing technology controls vaporization of flush

GREEN BUILDING CONSTRUCTION

Contributes to LEED points



Acorn Engineering Company's plumbing fixtures and systems work together to create a custom-designed, clean and sustainable hospital facility.

									
Mop Sinks Toilets/Urinals Wash Fountains Wash Basins Showers Hose Boxes	Water Coolers Drinking Fountains Remote Chillers	Eyewashes Drench Showers Combination Showers	(Entire Building) Vacuum Plumbing Systems	Tankless Instantaneous Water Heaters For Hand Washing In Bathrooms	Access Doors Roof Hatches	Outdoor Drinking Fountains and Recreational Structures	Drains and Rain Water Harvesting	Fire Extinguishers Cabinets Hoses Fire Department Connections	Therapy Equipment and Whirlpools
1	2	3	4	5	6	7	8	9	10

CORRECTIONAL APPLICATION



At the Salinas Valley State Prison in California, fixtures from Acorn Engineering Co., together with AcornVac® and Master-Trol® technologies, boost security and efficiency while conserving water.

In a prison, the plumbing gets a lot of attention. After all, something as simple as a clogged toilet often ends up being an inmate's intentional act to create a disturbance and compromise safety. Hidden contraband, blockages, and maintenance issues tax a facility's manpower and decimate its budget. For these reasons, correctional facilities must take careful steps in a plumbing system's planning and design.

Porcelain and vitreous china are words typically associated with something fragile and breakable—not a preferred characteristic in a correctional facility. Durable, heavy-gauge stainless steel fixtures, such as those found in Acorn Engineering Co.'s Penal-Ware™ line, are virtually indestructible, and able to with-

stand up to a 2-1/2 ton load (depending on the fixture) without damage. These products, such as wash basin/toilet combination units, toilets, urinals, security showers, drinking fountains and sinks, are made from unified pieces welded together as one seamless unit. This means that, besides being able to withstand high-impact, there are no removable parts to break off and use to inflict injury. The rounded design lacks any sharp edges, so inmates are also unable to fasten anything around the parts, thus taking the control out of the hands of the prisoners.

But safety, cost effectiveness, and even sustainability are valued beyond the unit itself. If the entire facility utilizes vacuum plumbing from AcornVac®, then mainline

clogs are eliminated and passing contraband is rendered impossible. As a bonus, each toilet fixture uses only 0.5 gallons per flush. In addition, if the entire building's water use is regulated on a water management system from MasterTrol®, control is specified right down to each point of use, and conservation and security is heightened. Even the water delivered to each point of use can be pre-set to a safe and specific temperature via a space-saving Chronomite® tankless electric water heater. All of these integrated plumbing solutions are available from Acorn Engineering Company when specifying a facility's construction.

CORRECTIONAL APPLICATION



From a single drinking fountain to products specially-engineered for ADA compliance and strength requirements, Acorn Engineering Co. has a solution to meet the needs of a whole correctional facility.

								
Mop Sinks Toilets/Urinals Wash Fountains Wash Basins Showers Hose Boxes	Water Coolers Drinking Fountains Remote Chillers	Eyewashes Drench Showers Combination Showers	(Entire Building) Vacuum Plum- ing Systems	Tankless Instantaneous Water Heaters For Hand Wash- ing In Bathrooms	Access Doors Roof Hatches	Drains and Rain Water Harvesting	Fire Extinguishers Cabinets Hoses Fire Department Connections	Therapy Equipment and Whirlpools
1	2	3	4	5	6	7	9	10

- INDESTRUCTIBLE PLUMBING FIXTURES
- HIGH-SECURITY PLUMBING

- WATER MANAGEMENT SOFTWARE
- WATER-SAVING TECHNOLOGIES

HOSPITALITY APPLICATION

- RESTAURANTS
- HOTELS
- BARS/NIGHTCLUBS
- STADIUMS
- SPAS

In the highly competitive area of hospitality, we understand that each of our customers is looking for that special something that is going to make them stand out from the competition. Sometimes a slight tweaking of an existing

product will suffice, other times the customer is looking for something completely new. When designing a fixture to fit a customer's needs in both form and function there are always going to be challenges. Trying to balance the cus-



Neo-Metro® 's System M2 Washbasin in the Palms Las Vegas Playboy nightclub.

Products easily integrate with building decor

							
Mop Sinks Toilets/Urinals Wash Fountains Wash Basins Showers Hose Boxes	Water Coolers Drinking Fountains Remote Chillers	(Entire Building) Vacuum Plum- bing Systems	Tankless Instantaneous Water Heaters For Hand Wash- ing In Bathrooms	Access Doors Roof Hatches	Drains and Rain Water Harvesting	Luxury Plumbing Products	Fire Extinguishers Cabinets Hoses Fire Department Connections
1	2	3	4	5	6	7	8

HOSPITALITY APPLICATION

tomers' conceptual aesthetics with the functionality of the fixture while meeting any applicable codes and regulations associated with the fixture can sometimes be very challenging.

We have collaborated with a number of luxury hotel clients such as the Pod Hotel in New York City, the Westin New York at Times Square in New York City and the Betsy Ross Hotel in South Beach Miami.

Each presented their own unique challenges. For properties such as these, the luxury of the overall environment needs to extend to every corner of the establishment, including the bathrooms.



Hotels can specify custom-designed products, from the smallest drain to whole vanity systems, from Acorn Engineering's Family of Companies

Above, right:
Wash-Ware® 6-Station Wash Fountain

Right:
Custom stainless steel bunk beds and vanity system is used in NYC's POD Hotel



COMMERCIAL APPLICATION

Picture a bathroom in a commercial setting containing a hand-washing basin manufactured from 80 percent recycled stainless steel, discreetly fitted with a tankless water heater and featuring the

most efficient water-saving engineering possible. Add in low-flow toilets, in addition to waterless or pint-flow urinals. If the entire building employs vacuum plumbing, each fixture instead uses only

0.5 gallons per flush, and if the entire building's water use is regulated on a computer network, conservation can be specified right down to each point of use. All of these integrated, eco-friendly



Potter Roemer® Cabinets easily integrate with any building's design



Acorn Engineering Co.'s products, including Neo-Metro®'s Ebb Console, are made from 80 percent recycled material - a durable and sustainable choice combined with sensor-operated faucets



Potter Roemer® custom image glass cabinet

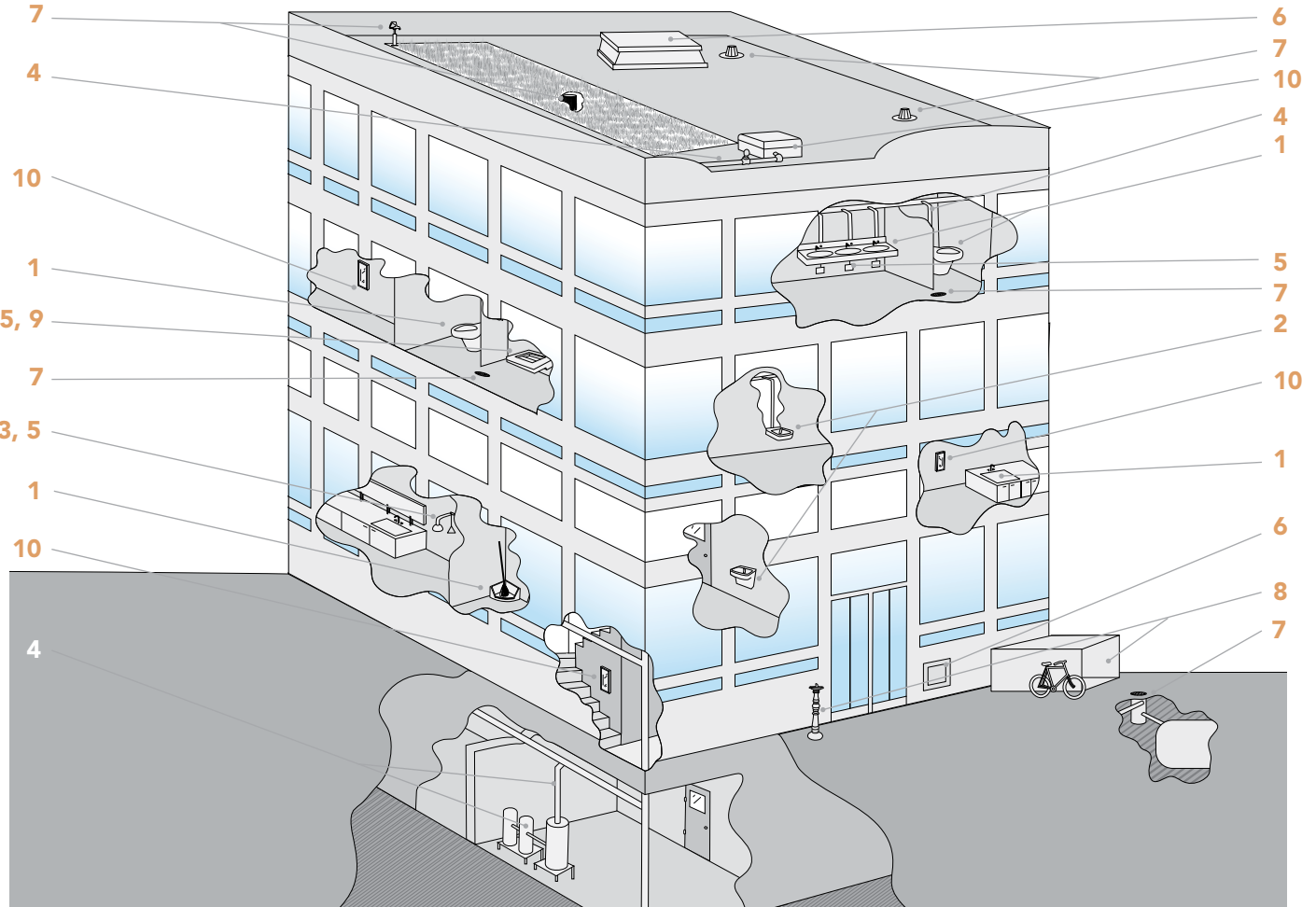


Acorn Aqua®'s AquaContour Drinking Fountain is both adult and child ADA compliant 

COMMERCIAL APPLICATION

fixtures and systems are possible from Acorn Engineering Co. Whatever the vision for design, function, or environmental impact, Acorn Engineering Co. can specify a project from start to finish.

- OFFICE BUILDINGS
 - AIRPORTS
 - MUSEUMS
- STADIUMS
 - RETAIL LOCATIONS
 - MULTI-UNIT RESIDENTIAL FACILITIES



Acorn Engineering Co. researches, designs and manufactures most of its product lineup, so customers have the benefit of going to one supplier with a “whole building” approach

Mop Sinks Toilets/Urinals Wash Fountains Wash Basins Showers Hose Boxes	Water Coolers Drinking Fountains Remote Chillers	Eyewashes Drench Showers Combination Showers	(Entire Building) Vacuum Plumbing Systems	Tankless Instantaneous Water Heaters For Hand Washing In Bathrooms	Access Doors Roof Hatches	Drains and Rain Water Harvesting	Drinking Fountains Hydrants Concession Stands Remote Bathrooms	Luxury Plumbing Products	Fire Extinguishers Cabinets Hoses Fire Department Connections
1	2	3	4	5	6	7	8	9	10



Est. 1954

ACORN ENGINEERING COMPANY

Manufacturers of Engineered Plumbing Products

Mailing:

P.O. Box 3527
City of Industry, CA 91744 U.S.A.
800-488-8999 • 626-336-4561

Street Address:
15125 Proctor Avenue
City of Industry, CA 91746

Fax: 626-961-2200
International Fax: 1-626-937-4757
Web: www.acorneng.com

DISTRIBUTION CENTERS

Florida

8306 N.W. 14th Street • Doral, FL 33126
866-961-3473 Fax 866-960-0844

Georgia

4103 Tench Road, Suite 100
Suwanee, GA 30024
800-762-0542 Fax 888-249-8002

Illinois

1350 N. Michael Drive #B
Wood Dale, IL 60191
800-547-3473 Fax 630-766-4609

New Jersey

1480 Ridgeway Street • Union, NJ 07083
800-526-4592 Fax 908-964-9056

Texas

1500 Precision Dr. Suite 120 • Plano, TX 75074
866-644-3473 Fax 972-516-1888

PARTNER DISTRIBUTION CENTERS

ACORN/POWELL, LTD *United Kingdom*

5 Brearley Court • Baird Road
Quedgeley, Gloucester GL2 2AF United Kingdom
01452-721211 • Fax 01452-721231
www.acornpowell.co.uk

ACUDOR/ACORN, LTD *Canada*

1125 Squires Beach Road
Pickering, Ont. Canada L1W3T9
905-427-9957 • Fax 905-427-7534
www.acudoracornltd.com

JAY R. SMITH MFG. CO. *Alabama*

P.O. Box 3237
Montgomery, AL 36109-0237
800-467-6484 Fax 334-272-7396

ELMCO/STEWART *Arizona*

3201 W. Virginia Ave., Suite 5
Phoenix, AZ 85009
602-269-0585 Fax 602-278-2567

ELMCO/DUDDY *Southern California*

P.O. Box 3787 • City of Industry, CA 91746
626-333-9942 Fax 626-855-4811
9750 Birch Canyon Place • San Diego, CA 92126
858-437-0112 Fax 858-437-0117

ELMCO/FORD *Las Vegas*

5022 Bond St. • Las Vegas, NV 89118
702-871-1966 Fax 702-871-2686

ELMCO & ASSOCIATES *Northern California*

8366 Valdez Avenue • Sacramento, CA 95828
916-383-0110 Fax 916-383-0181

ELMCO & ASSOCIATES *San Francisco*

Warehouse
1195 Evans Avenue
San Francisco, CA 94124-1796

ACORN FAMILY OF COMPANIES



ACORN AQUA

Drinking Fountains
P.O. Box 3527 • City of Industry, CA 91744-0527 U.S.A.
800-591-9360 • Fax 626.855.4894
www.acornaqua.com



ACORN-GENCON PLASTICS, LLC

Injection Molded Products
13818 Oaks Avenue • Chino, CA 91710 U.S.A.
909-591-8461 • Fax 909-628-7465
www.acorn-gencon.com



ACORN SAFETY

Emergency Drench Systems
P.O. Box 3527 • City of Industry, CA 91744-0527 U.S.A.
800-591-9360 • Fax 626-937-1213
www.acornsafety.com



ACORNVAC

Vacuum Plumbing Systems
13818 Oaks Avenue • Chino, CA 91710 U.S.A.
800-591-9920 909 902-1141 • Fax 909-902-3041
www.acornvac.com



CHRONOMITE LABORATORIES, INC.

Tankless Electric Water Heaters
P.O. Box 3527 • City of Industry, CA 91744-0527 U.S.A.
800-447-4962 • Fax 626-937-4279
www.chronomite.com



ELMDOR/STONEMAN MANUFACTURING

Access Doors and Roof Flashing Assemblies
P.O. Box 3527 • City of Industry, CA 91744-0527 U.S.A.
800-591-9181 626-968-8699 • Fax 626-333-4109
www.emdorstoneman.com



JAY R. SMITH MFG. CO.

Plumbing, Drainage and Rainwater Harvesting Products
P.O. Box 3237 • Montgomery, AL 36109-0237
800-467-6484 Fax 334-272-7396
www.jrsmith.com



MURDOCK-SUPER SECUR

Pre-engineered Modular Buildings,
Drinking Fountains, Water Hydrants
P.O. Box 3527 • City of Industry, CA 91744-0527 U.S.A.
800-591-9880 626-333-2543 • Fax 626-855-4860
www.murdock-supersecur.com



NEO-METRO®

Luxury Stainless Steel Plumbing Fixtures
P.O. Box 3527 • City of Industry, CA 91744-0527 U.S.A.
800-591-9050 626-855-4854 • Fax 626-937-4725
www.neo-metro.com



POTTER ROEMER

Fire Protection Equipment
P.O. Box 3527 • City of Industry, CA 91744-0527 U.S.A.
800-366-3473 • Fax 626-937-4777
www.potterroemer.com



WHITEHALL MANUFACTURING

Hospital and Therapy Products
P.O. Box 3527 • City of Industry, CA 91744-0527 U.S.A.
800-782-7706 626-968-6681 • Fax 626-855-4862
www.whitehallmfg.com